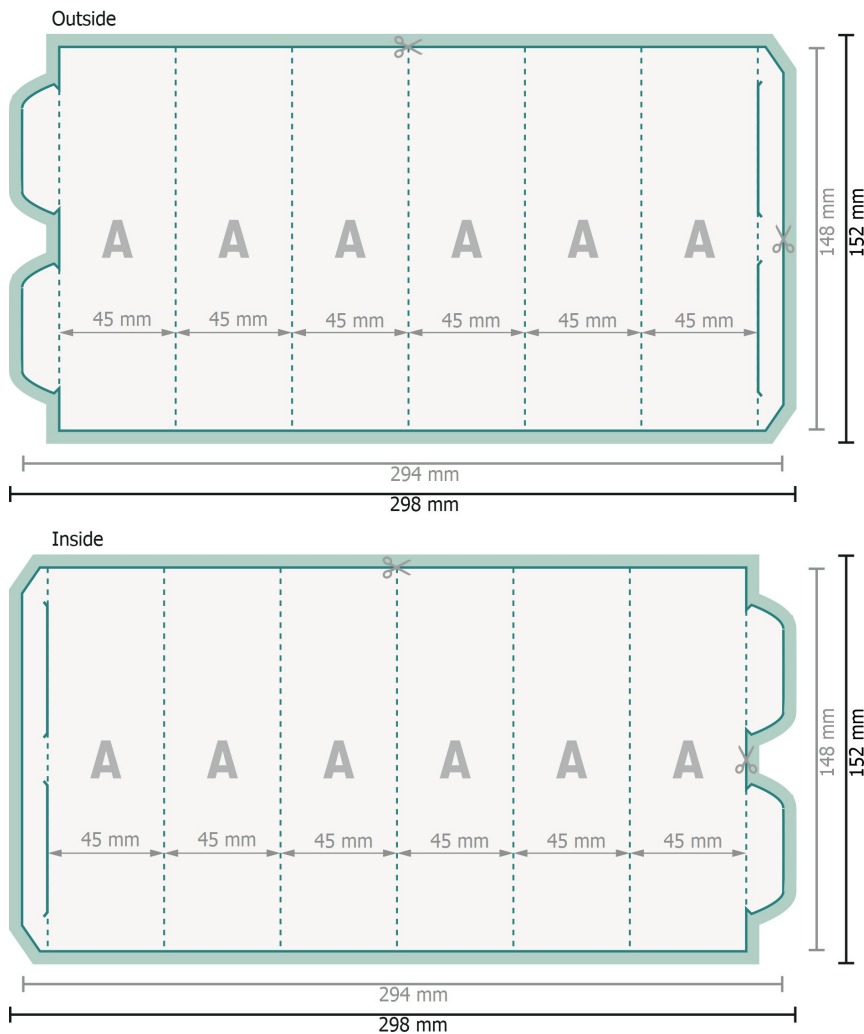


Displays, Hexagonal



Dataformat (incl. 2 mm bleed):
29,8 x 15,2 cm

bleed:
2 mm

Trimmed size:
29,4 x 14,8 cm

Trimmed size (closed):
4,5 x 14,8 cm

Explanation of symbols

- Bleed
- Trimmed size
- Data format
- Creasing/Folding

Please remove the die line from the download template before generating your printfiles.
Please provide a second file (view file) to specify the position of the die line.

Please note:

Allow for trim allowance and safety margin according to instructions.

Arrange background graphics, images or graphics up to the edge of the data format.

Tolerances may occur during production due to cutting, punching and folding processes.

Printing data: Instructions and templates can be found under the menu item *Printing data* at www.onlineprinters.com