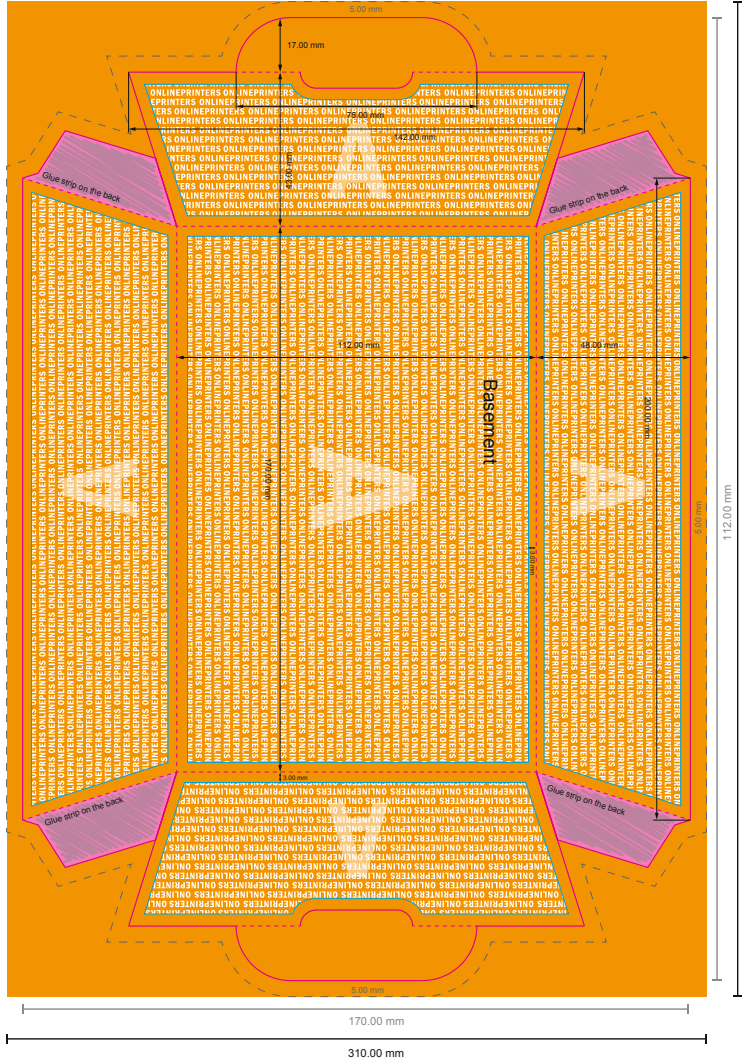


17.0 x 11.2 x 4.8 cm

Format view rotated by 90 degrees.

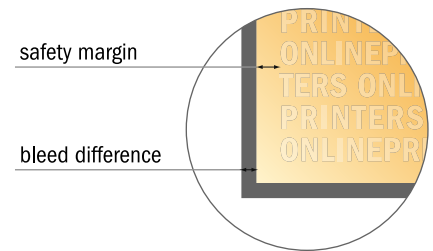


**NOTE**

Please remove the die line from the download template before generating your artwork files.  
Please provide a second file (view file) to specify the position of the die line.

- Data format:  
30.00 x 20.80 cm
- Data format (incl. 5.00 mm bleed):  
31.00 x 21.80 cm
- Trimmed size:  
17.00 x 11.20 cm

- **Safety margin**  
Maintaining 4 mm space between the text/information and the edge of the trimmed format prevents undesirable cuts.



**Please note:**

- Allow for trim allowance and safety margin according to instructions.
- Arrange background graphics, images or graphics up to the edge of the data format.
- Tolerances may occur during production due to cutting, punching and folding processes.
- This sketch is not drawn to scale.
- Printing data: Instructions and templates can be found under the menu item "Printing data" at [www.onlineprinters.com](http://www.onlineprinters.com).