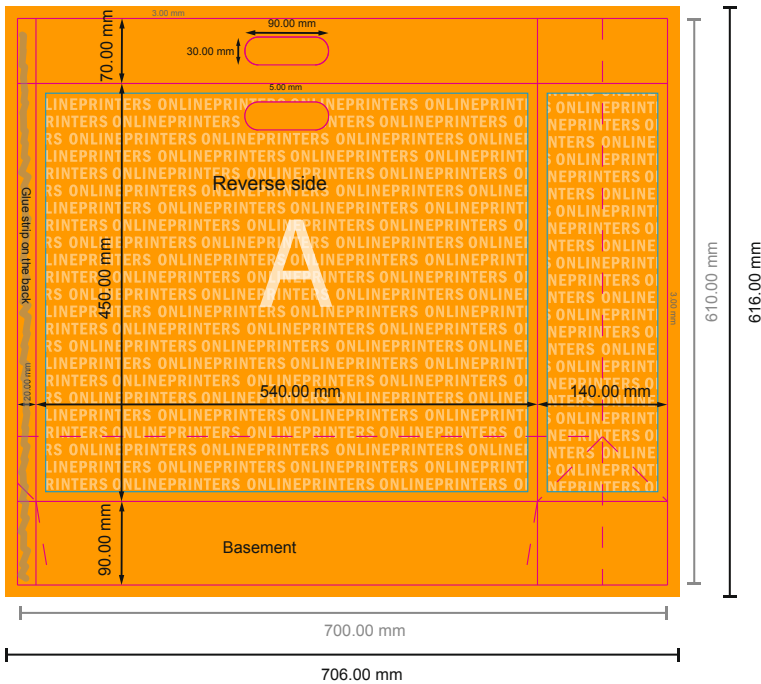
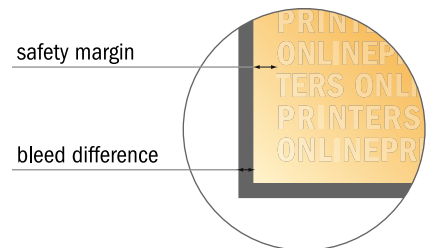


# STANDARD paper bags with die cut handles

54 x 45 x 14 cm



- Data format (incl. 3.00 mm bleed): 70.60 x 61.60 cm
- Trimmed size (open): 70.00 x 61.00 cm
- Trimmed size (closed): 54.00 x 45.00 x 14.00 cm
- **Safety margin**  
Maintaining 5.00 mm space between the text/information and the edge of the trimmed format prevents undesirable cuts.



**NOTE**

Please remove the die line from the download template before generating your artwork files.  
Please provide a second file (view file) to specify the position of the die line.

**Please note:**

- Allow for trim allowance and safety margin according to instructions.
- Arrange background graphics, images or graphics up to the edge of the data format.
- Tolerances may occur during production due to cutting, punching and folding processes.
- This sketch is not drawn to scale.
- Printing data: Instructions and templates can be found under the menu item "Printing data" at [www.onlineprinters.com](http://www.onlineprinters.com).

